

# mClicker User Manual

---



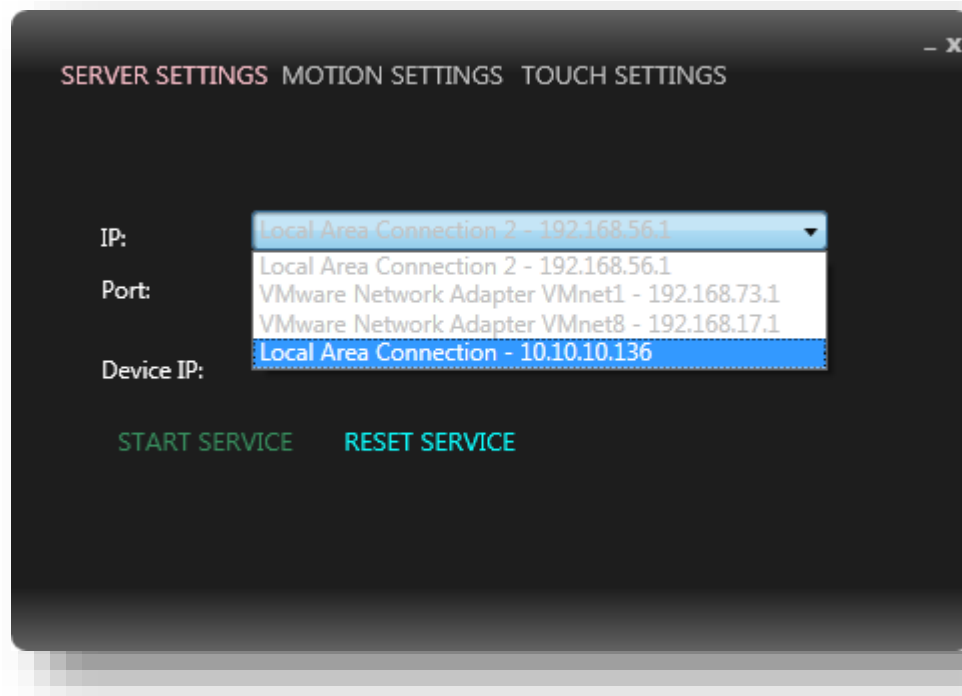
## Table of Contents

Establishing a Connection	1
Presentation Screen	5

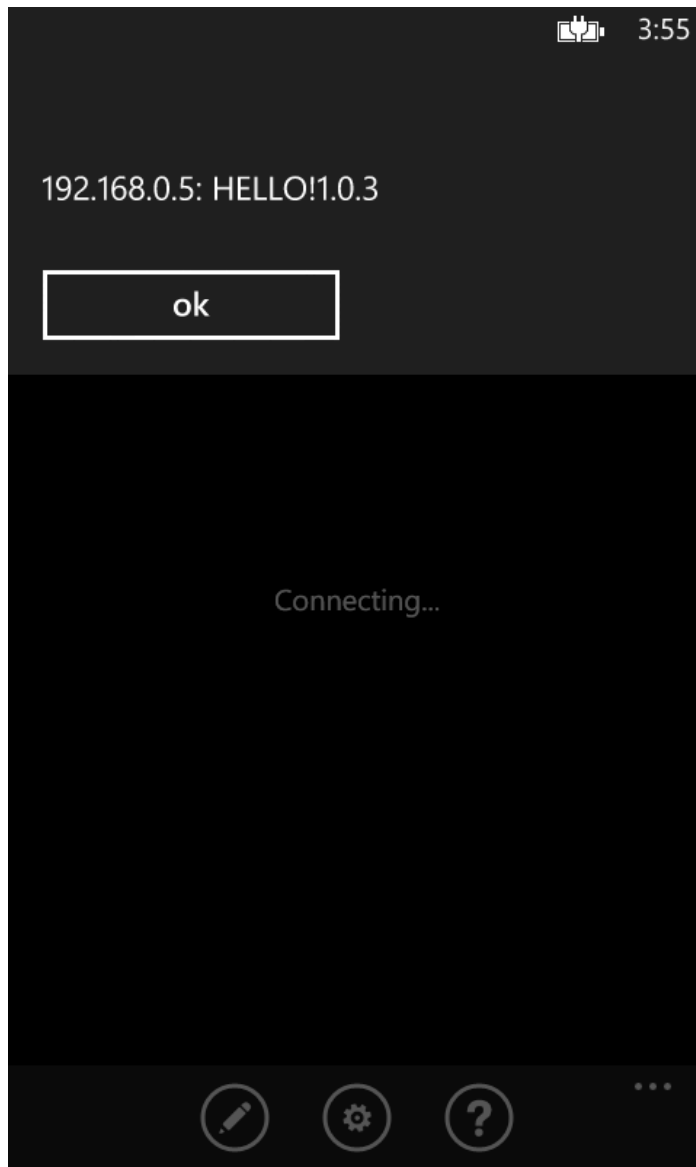
## Establishing a Connection

1. Install mClicker Presentation for Windos Phone 8 from the Windows Phone Store

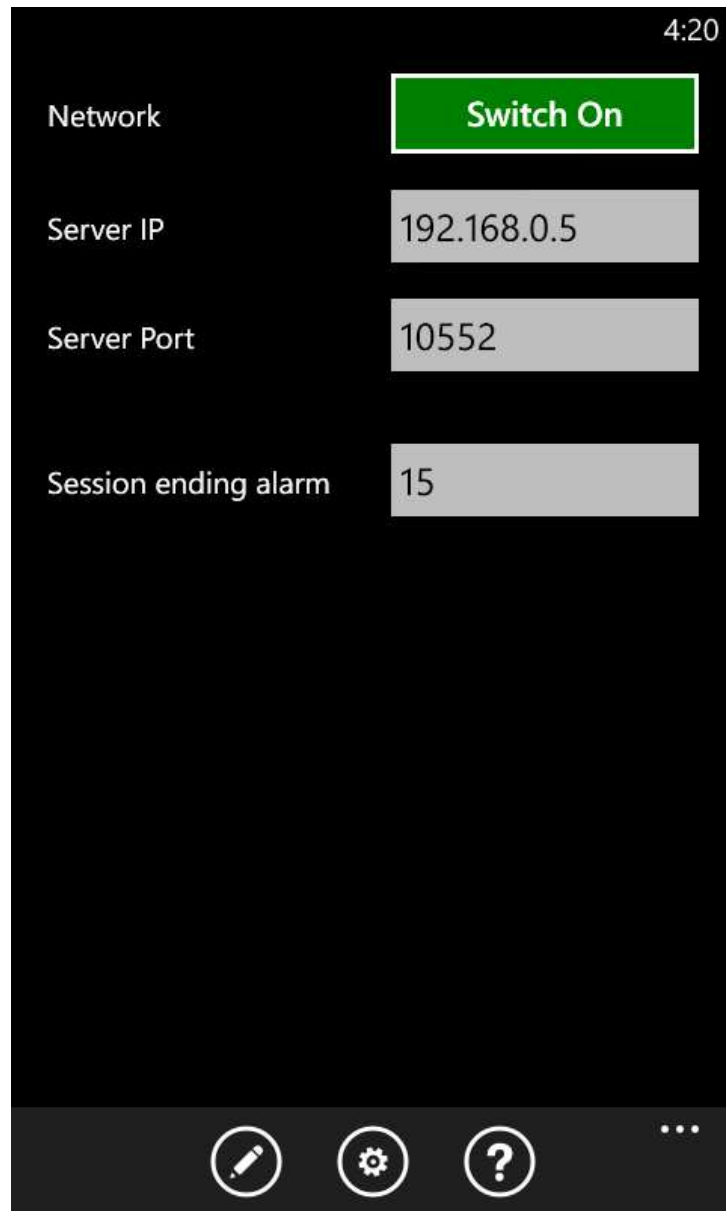
2. Download mClicker server from <http://mclicker.com/Content/IMouseService.Setup.msi>
3. Install mClicker server and run it. Choose network adapter and the IP address of the PC where the server is running. This usually is Local Area Connection.



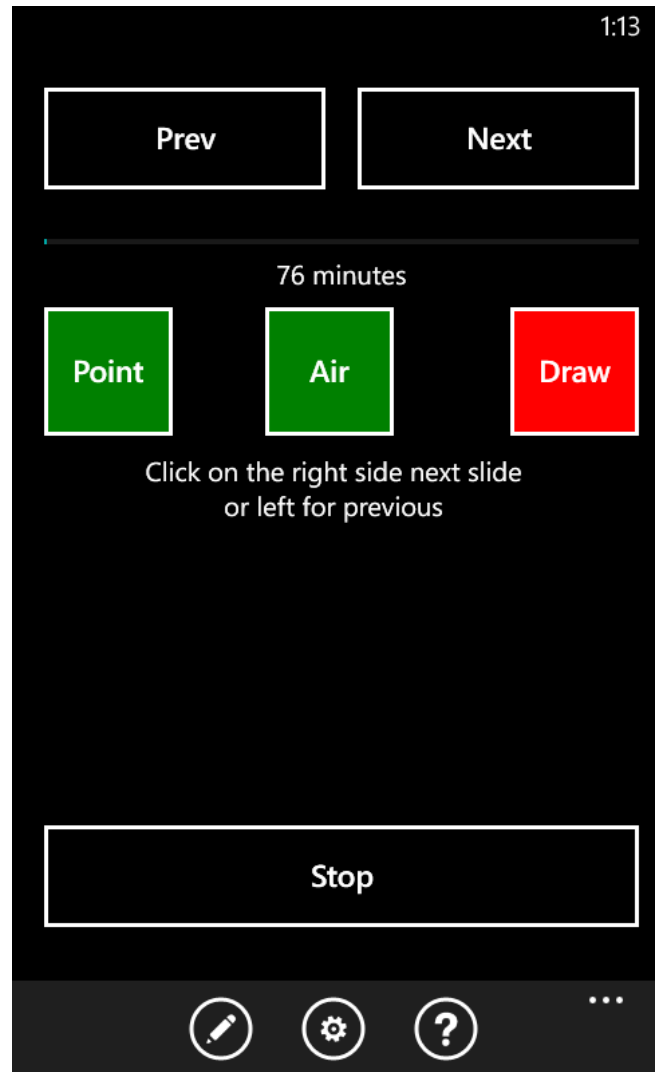
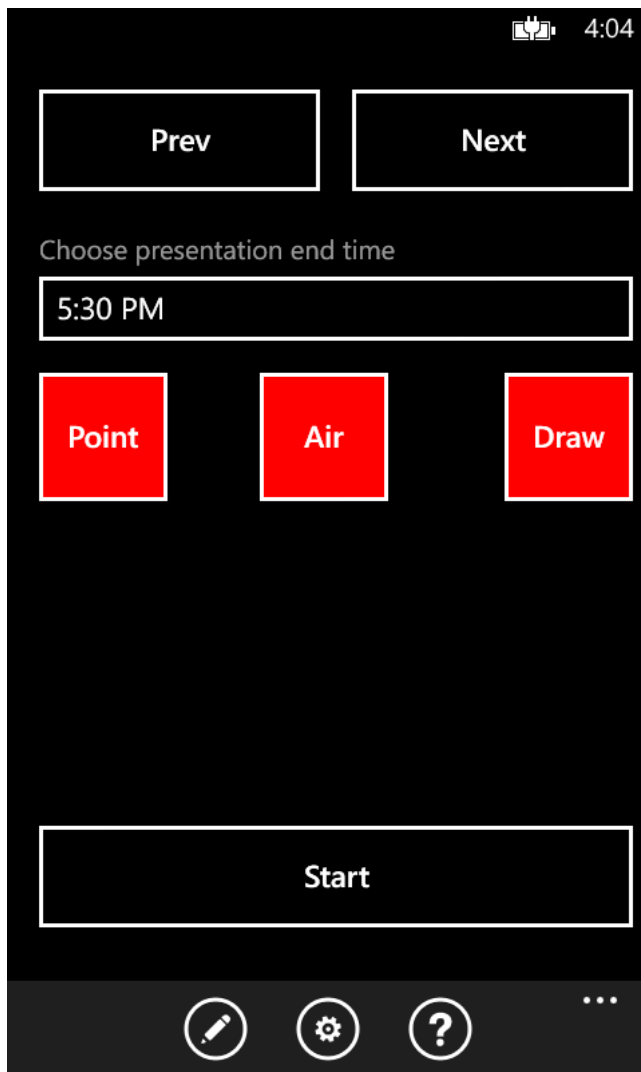
4. Select a port – the default port is 10552 - please note that if you have fire wall running on your PC you should create an exception for that port and open it. Here is a guide how to do that: <http://windows.microsoft.com/en-US/Windows7/Open-a-port-in-Windows-Firewall>
5. Press “START SERVICE” button at the bottom left corner of SERVER SETTINGS screen.



6. Run mClicker on your 'Windows phone' device and it will automatically connect to the server
7. Skip the next section if you are not interested in manual setup/troubleshooting
8. Enter in the Server IP box the IP of the server – **the one that was selected on step 3 of this manual**. Enter the port number– **the same one which was selected on step 4 of this manual**. Tap on Switch ON button and if the connection is successful a notification box will popup.



## Presentation Screen



### Features on the screen

1. Presentation end time – choose when your presentation is going to end. You will receive a notification (by vibration) when there are certain amount of minutes left of your presentation. There is a setting on the Settings screen “Session ending alarm” which controls the amount of minutes.
2. Tap on Start button in order to start the presentation
3. Tap on the right hand side of the black area in the middle (between start/stop button and the Point/Air/Draw buttons) for next slide and on the left hand side for the previous slide.
4. Next and Prev buttons are changing the slides as well.
5. Point – changes the cursor from arrow to red dot and brings it back to arrow.
6. Air – switches between touchpad and Air mode. Before switch on Air mode (color of the button changes from red to green) point the phone to the center of the screen.
7. Draw – switches between draw on/off. When Draw is on the movement of the cursor on the screen is drawing a red line. Handy for highlight certain parts of the presentation. **Note when the PC screen is refreshed the drawing disappears.**

